

Phone: 303-549-2821

# The Juniper

web site:  
[mountainplainhomes.com](http://mountainplainhomes.com)

## Craftsman Elevation



Mountain Plain Homes, Inc.  
Custom Home Builder  
for the Discriminating Buyer  
823 Countrybriar Lane  
Highlands Ranch, CO 80129  
Phone: 303-549-2821

Phone: 303-549-2821

# The Juniper

web site:  
[mountainplainhomes.com](http://mountainplainhomes.com)

## Traditional Elevation



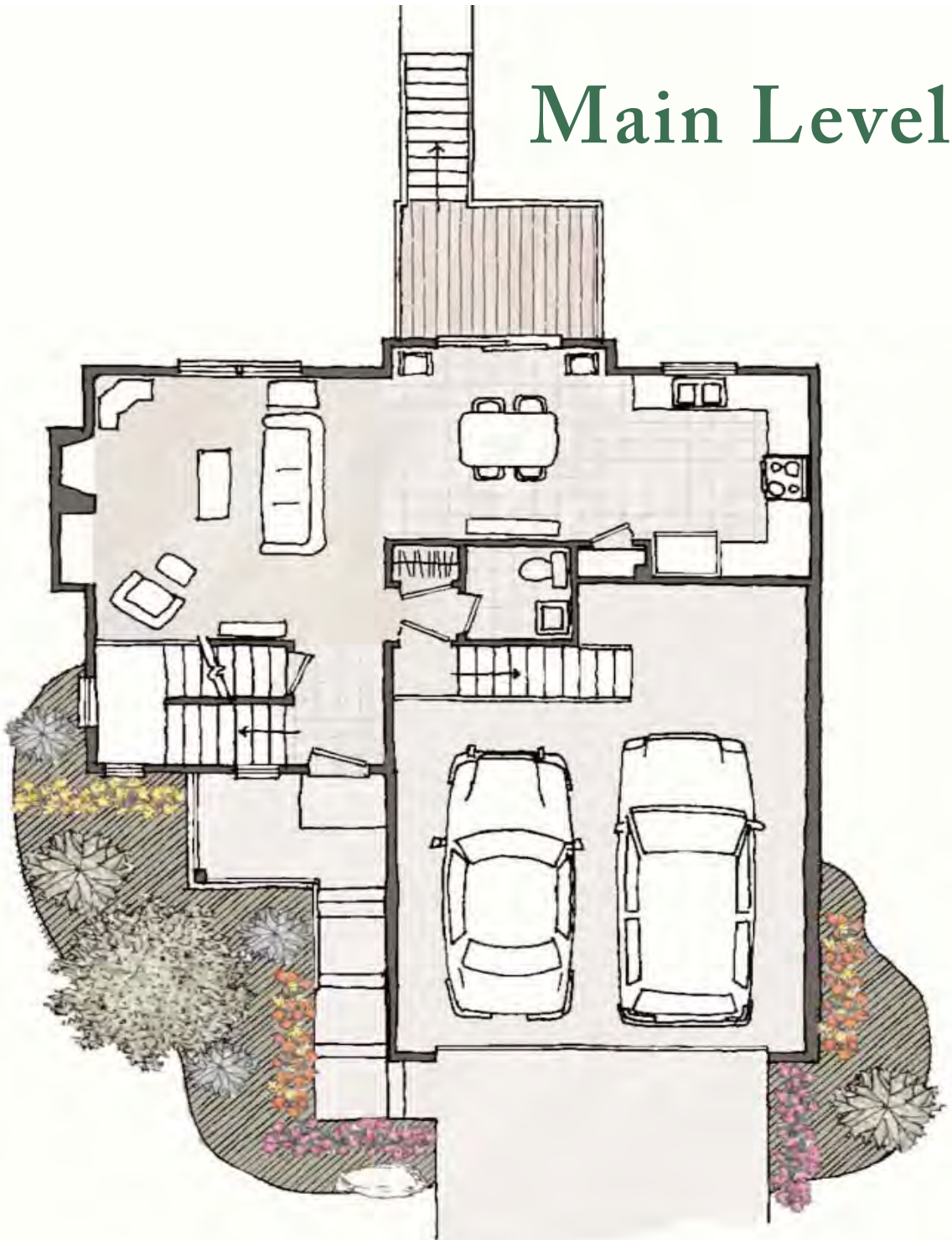
Mountain Plain Homes, Inc.  
Custom Home Builder  
for the Discriminating Buyer  
823 Countrybriar Lane  
Highlands Ranch, CO 80129  
Phone: 303-549-2821

Phone: 303-549-2821

# The Juniper

web site:  
[mountainplainhomes.com](http://mountainplainhomes.com)

## Main Level



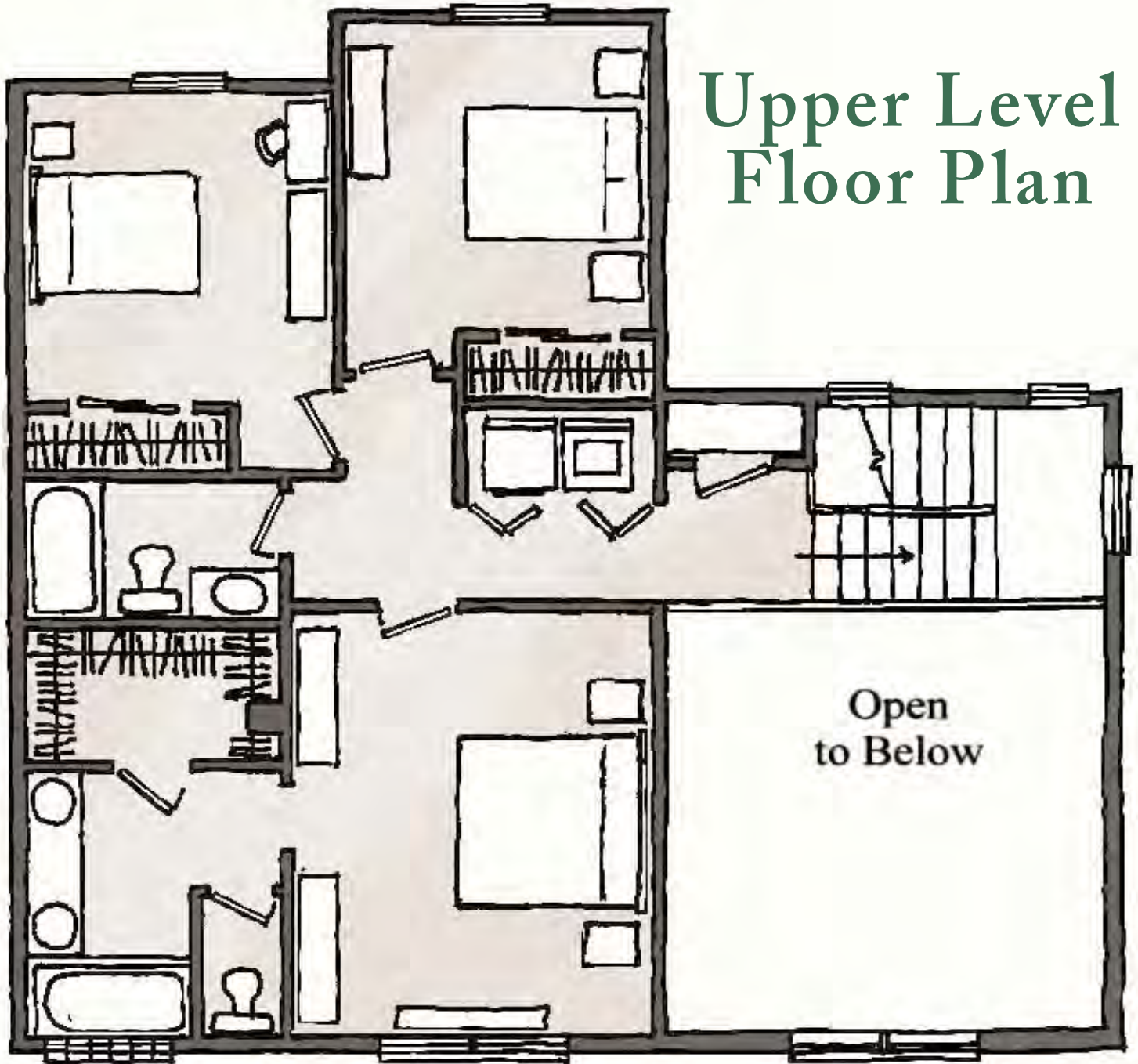
Mountain Plain Homes, Inc.  
Custom Home Builder  
for the Discriminating Buyer  
823 Countrybriar Lane  
Highlands Ranch, CO 80129  
Phone: 303-549-2821

Phone: 303-549-2821

# The Juniper

web site:  
mountainplainhomes.com

## Upper Level Floor Plan



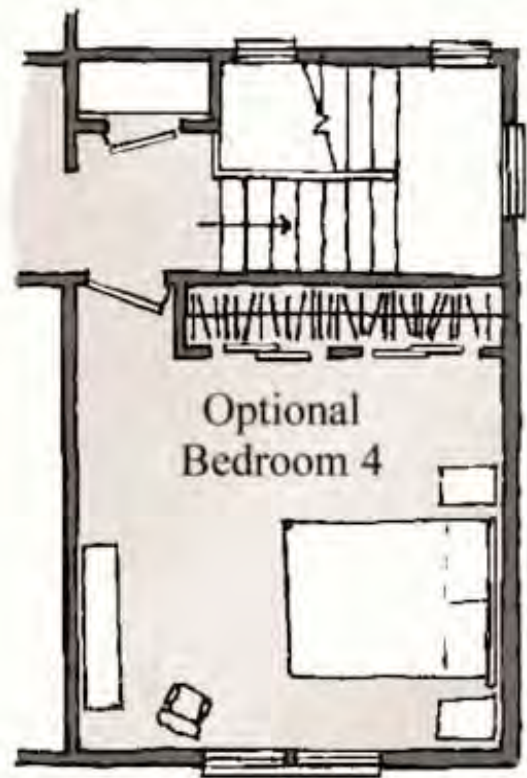
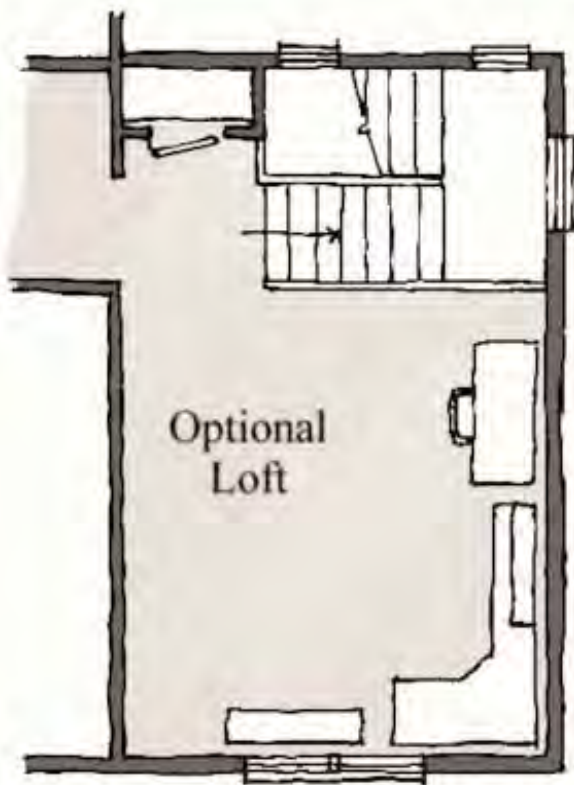
Mountain Plain Homes, Inc.  
Custom Home Builder  
for the Discriminating Buyer  
823 Countrybriar Lane  
Highlands Ranch, CO 80129  
Phone: 303-549-2821

Phone: 303-549-2821

# The Juniper

web site:  
mountainplainhomes.com

## Upper Level Options



Mountain Plain Homes, Inc.  
Custom Home Builder  
for the Discriminating Buyer  
823 Countrybriar Lane  
Highlands Ranch, CO 80129  
Phone: 303-549-2821

Phone: 303-549-2821

# The Juniper

web site:  
mountainplainhomes.com



## Unfinished Garden Level

Mountain Plain Homes, Inc.  
Custom Home Builder  
for the Discriminating Buyer  
823 Countrybriar Lane  
Highlands Ranch, CO 80129  
Phone: 303-549-2821



Phone: 303-549-2821

web site:  
mountainplainhomes.com

# The Juniper

Two-story  
Finished square footage:  
1,421 on large lot.

Three bedrooms,  
Two and one-half baths,  
two car garage.

Two exterior elevations to  
choose from.

Unfinished  
garden-level basement.

Great room with fireplace,  
built-in entertainment  
center and bookshelves.

Dining Room, Kitchen  
and powder bath.



Three bedrooms  
including Master Suite  
with 4 piece master bath.

Full bath, 2nd level  
laundry.

Optional 4th bedroom or  
loft.

Rear deck with stairs.  
Covered front porch.  
2 car garage.

Additional bathrooms  
may be added to the  
basement for \$6,500  
each.

We will take reservations  
up to 14 days. \$5,000  
earnest money made  
payable to Stewart Title.

**Base Price: \$279,900**

## Directions:

To visit Castlewood Ranch, take I-25 south from Denver to Exit #184, turn left on Founder's Parkway and travel 4-1/2 miles to Highway 86. At the Highway 86 intersection, continue straight on Ridge Road for 1-1/2 miles and follow the signs to Castlewood Ranch and the distinctive "windmill" entry which is Mikelson Blvd. Turn east on Mikelson to Mitchell. Turn right on Mitchell and follow the street around to Piñon Bluffs.



Plans and elevations are an artist's conception/rendering only and should not be relied upon as a representation of a completed house. The actual home as constructed may or may not contain the exact features and layouts depicted. Floor plans, elevations, features and related information, and information concerning the pricing and availability of our homes, are subject to change without notice. Drawings shown are not to exact scale.



## Front Elevation - Traditional

The Juniper - Concept only. Actual plans may vary



## Front Elevation - Craftsman

The Juniper - Concept only. Actual plans may vary

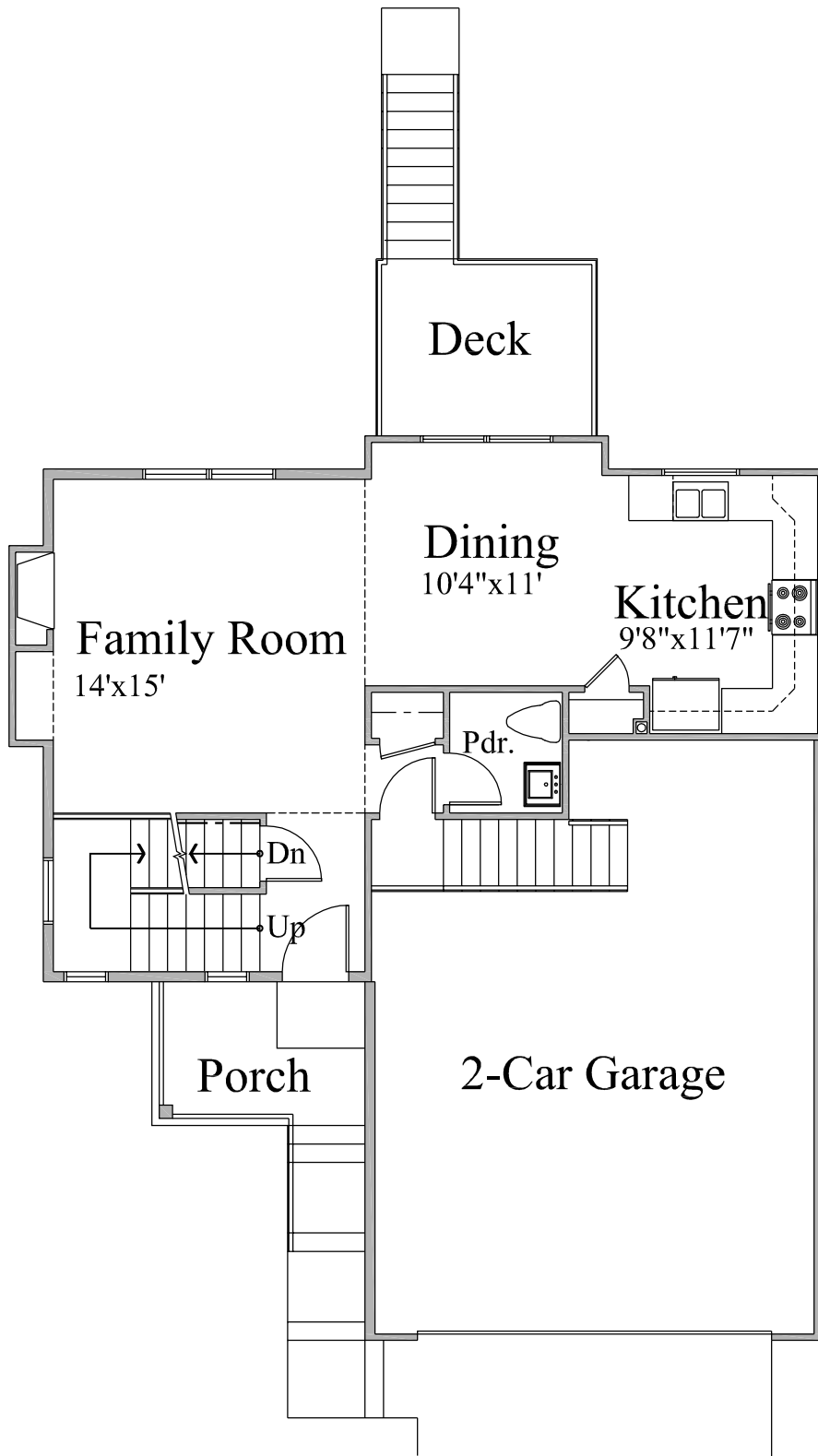


Garden level basement is standard on all homes.

Note: Deck stairs are not shown for clarity.

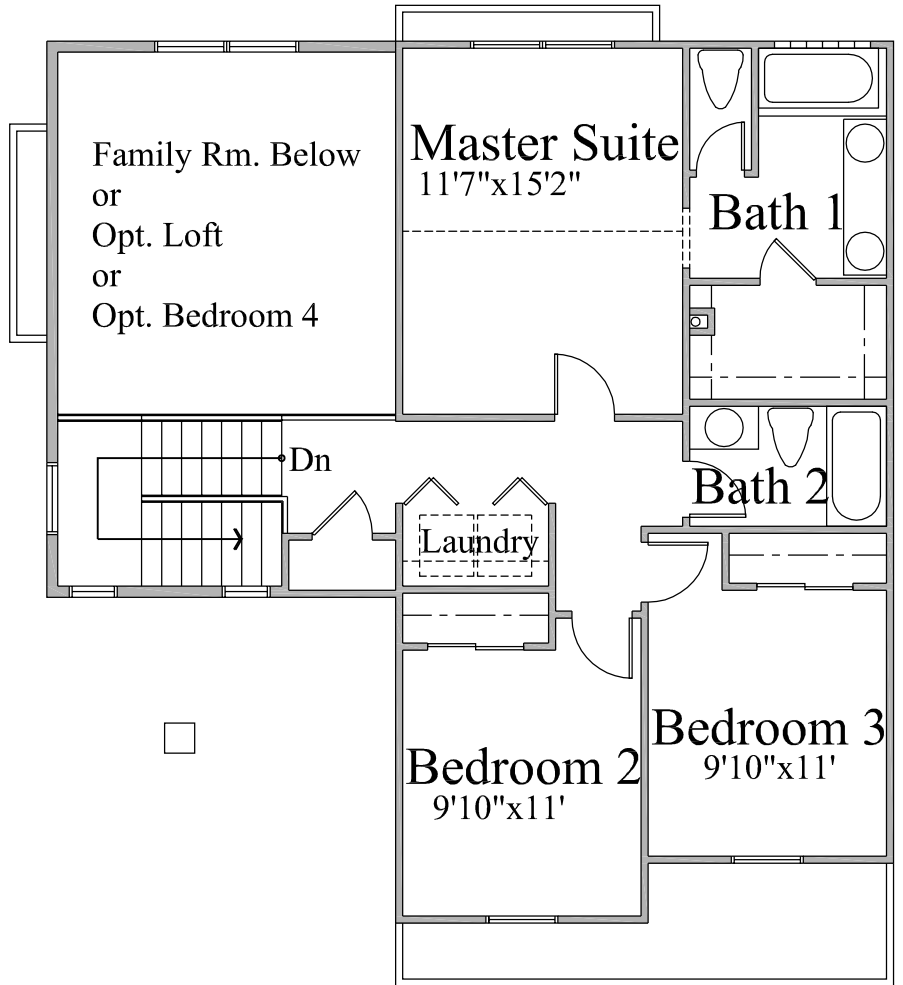
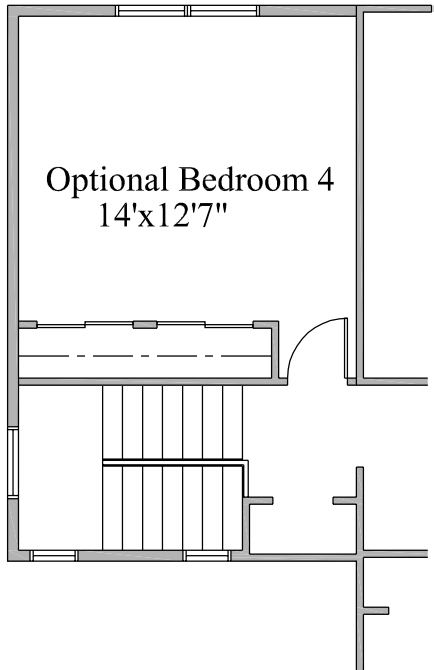
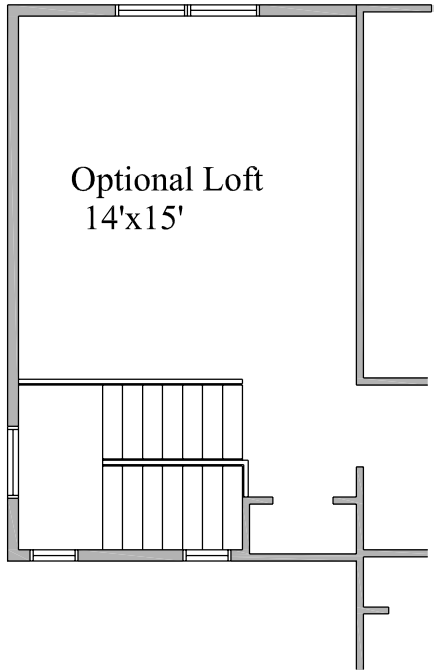
## Rear Elevation

The Juniper - Concept only. Actual plans may vary



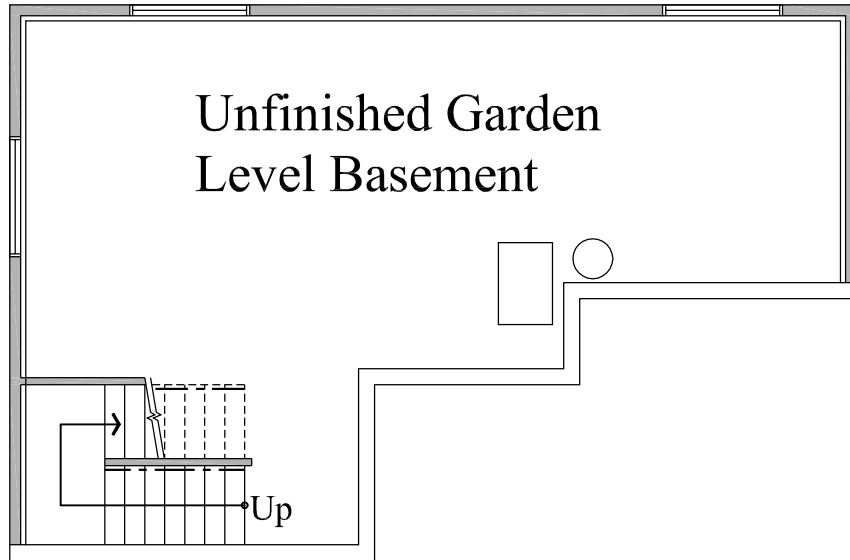
## First Level Floor Plan

The Juniper - Concept only. Actual plans and dimensions may vary



## Second Level Floor Plan

The Juniper - Concept only. Actual plans and dimensions may vary



**Basement Level Plan**  
The Juniper - Concept only. Actual plans may vary